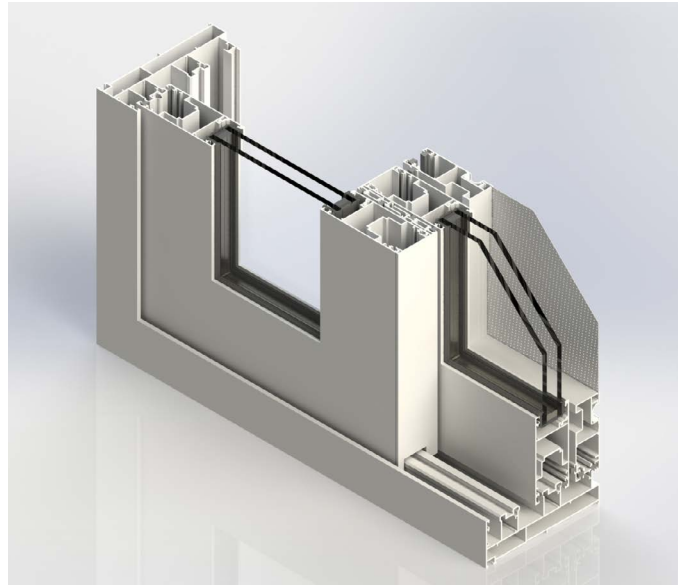
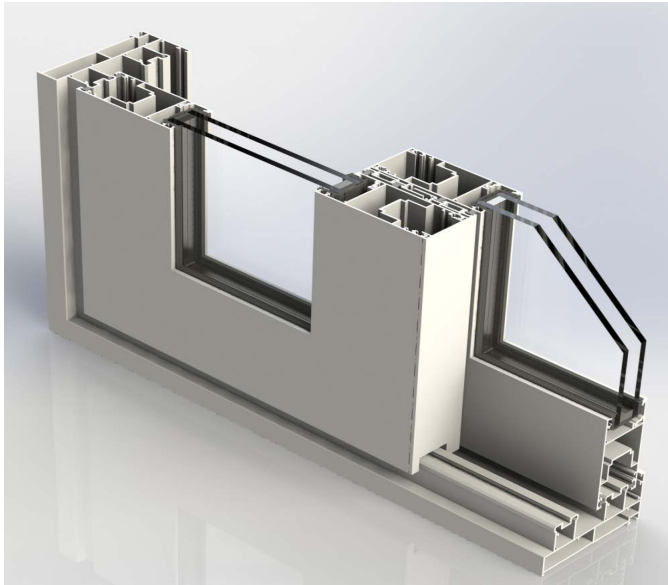


TWF.ASA.39.LS

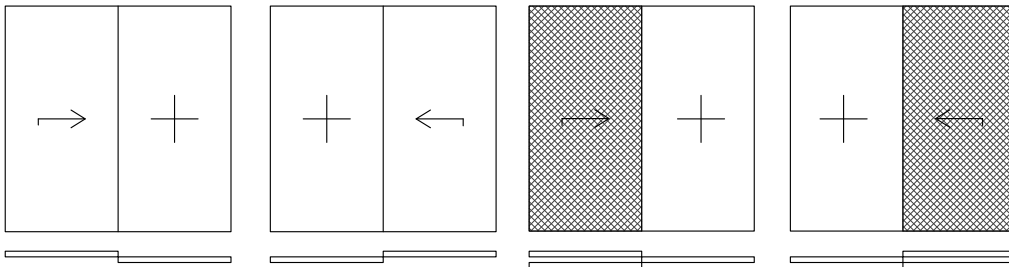
Aluminium Sliding Lift and Slide System Primo Series



TWF.ASA.39.LS is a non-thermal break lift and slide system specially designed to provide utmost safety and security. The whole mechanism of the system runs on its handle, which goes 180 degree lifting the sash resulting into smooth operation. The same operation when done to lock the system, the sash vacuums itself to the track at any point and locks itself to the track in a way that it does not move. The same operation if done at the locking point gives dual benefits by additionally locking to two points on the vertical track.

There is additional option of in track sliding fly screen on the outer track.

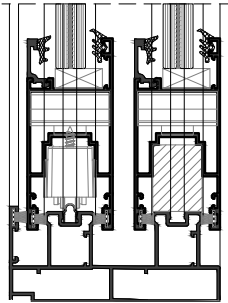
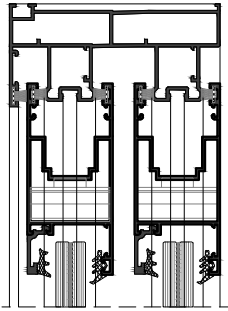
System Typology



TWF.ASA.39.LS

Aluminium Sliding Lift and slide System Primo Series

TWF.ASA.39.LS Section Scale 1:3.5



Features

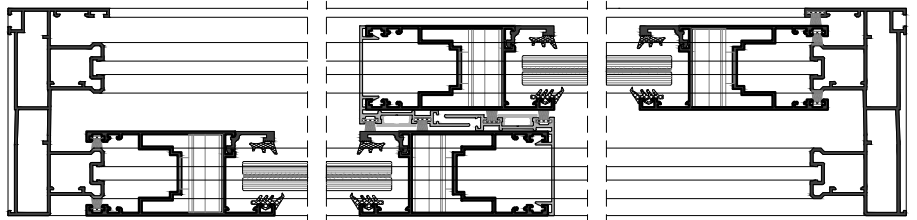
Maximum Aperture/ Sash (W x H)	5000mm X 3000mm / 2500mm X 3000mm
Maximum Sash Weight	200 Kgs
Bottom Track Concealed	Can be Concealed with respect to flooring*
Glass Thickness	10mm - 21mm
Locking	Multi Point
Handle	Multi Point (projected)
Thermal Break	No
Fly mesh	Yes (Integrated in 3 Track)
Automation	Yes (Optional)
Sound Reduction	Up to 32 dB

Technical Specification

Track Height	47mm	
Track Width	2T	96mm
	3T	131mm
Sash Width	39mm	
Sash Height	87mm	
Interlock Width	90mm	
Aperture Area to Glass Area Ratio	Upto 88%	

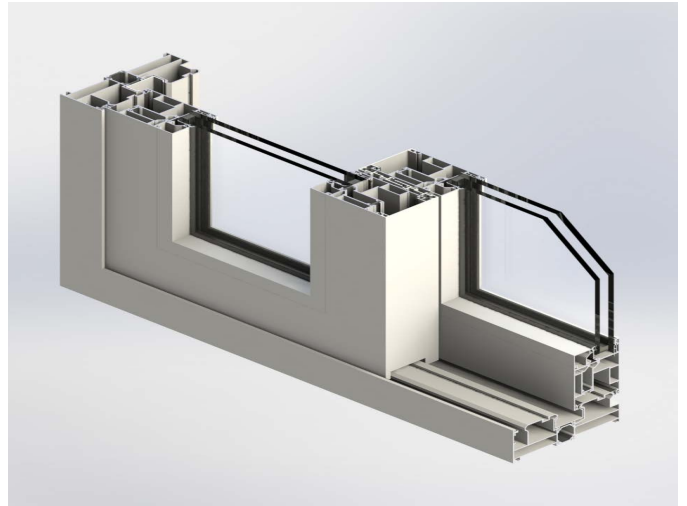
* Above data is for reference purpose only. It is advisable to take prior confirmation from our design team before placing any order.

TWF.ASA.39.LS Plan Scale 1:3.5



TWF.ASA.66.LS.TB

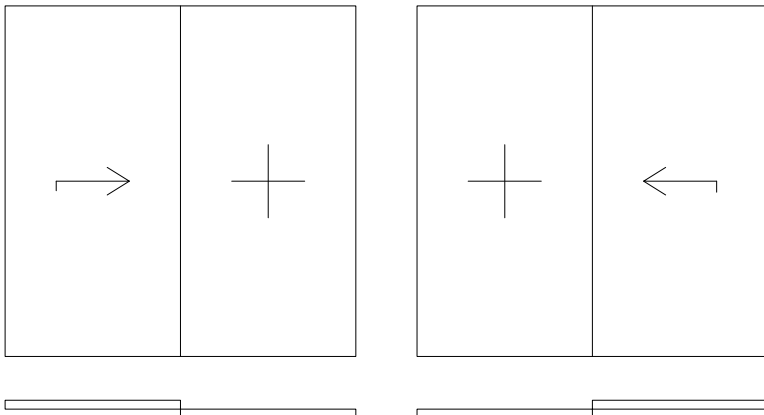
Aluminium Sliding Lift and Slide System Supremo Series



TWF.ASA.66.LS.TB is a non-thermal break lift and slide system specially designed to provide utmost safety and security along with complete vacuum tightness which does not allow a particle of dust to enter inside the room. The whole mechanism of the system runs on its handle, which goes 180 degree lifting the sash resulting into smooth operation. The same operation when done to lock the system, the sash vacuums itself to the track at any point and locks itself to the track in a way that it does not move. The same operation if done at the locking point gives dual benefits by additionally locking to two points on the vertical track.

In this system we can achieve per sash height up to 3600.

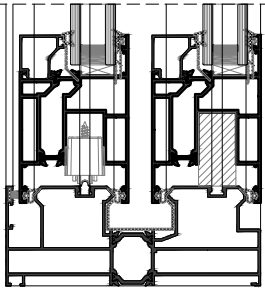
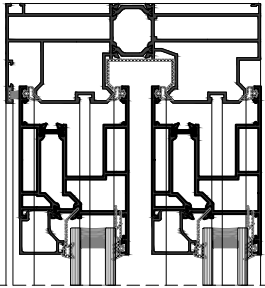
System Typology



TWF.ASA.66.LS.TB

Aluminium Sliding Lift and Slide System Supremo Series

TWF.ASA.66.LS.TB Section Scale 1:4.5



Features

Maximum Aperture/ Sash (W x H)	5000mm X 3600mm / 2500mm X 3600mm
Maximum Sash Weight	300 Kgs
Bottom Track Concealed	Can be Concealed with respect to flooring*
Glass Thickness	10mm - 43mm
Locking	Multi Point
Handle	Multi Point (projected)
Thermal Break	Yes
Fly mesh	No (Additional can be provided)
Automation	Yes (Optional)
Sound Reduction	Up to 35 dB

Technical Specification

Track Height	60mm	
Track Width	2T	153mm
Sash Width	66mm	
Sash Height	101mm	
Interlock Width	108mm	
Aperture Area to Glass Area Ratio	Upto 85%	

* Above data is for reference purpose only. It is advisable to take prior confirmation from our design team before placing any order.

TWF.ASA.66.LS.TB Plan Scale 1:4.5

